

*Peer Team Report*  
on  
2<sup>nd</sup> Cycle of  
Institutional Assessment and Accreditation  
Of

**Shri SantDamajiMahavidyalaya,  
Mangalwedha**

Dates of Visit: 8<sup>th</sup> – 10<sup>th</sup> September 2016

Place :Mangalwedha, DistSolapur

Pin: – 413 305,  
Maharashtra



**NATIONAL ASSESSMENT AND ACCREDITATION COUNCIL**

*An Autonomous Institution of the University Grants Commission*

P.O. Box No. 1075, Nagarbhavi, Bangalore - 560 072, INDIA

## NAAC for Quality and Excellence in Higher Education

Section II: CRITERION WISE ANALYSIS	Observations (Strengths and/or Weaknesses) on Key-Aspects
<b>2.1 Curricular Aspects:</b>	
2.1.1 Curricular Design & Development:	<ul style="list-style-type: none"> <li>• Curriculum is laid down by the affiliating University.</li> <li>• Academic schedule is planned by the University. College teachers participate in the Syllabus framing Committees.</li> <li>• Institution has started English Speaking course.</li> </ul>
2.1.2 Academic Flexibility:	<ul style="list-style-type: none"> <li>• Limited scope for flexibility in regular courses.</li> <li>• Three career oriented courses introduced one on Tally and another on Montessori Teaching.</li> </ul>
2.1.3 Curriculum Enrichment:	<ul style="list-style-type: none"> <li>• College has limited scope in updating the curriculum. Open University Centre is functional.</li> <li>• Career oriented courses are designed. Permission is being sought from University.</li> <li>• Subject based Wall papers are displayed on important topics.</li> </ul>
2.1.4 Feedback System:	<ul style="list-style-type: none"> <li>• Formal feedback system exists, but intermittent.</li> <li>• Informal feedback from parents and alumni is obtained.</li> </ul>
<b>2.2 Teaching-Learning &amp; Evaluation:</b>	

## NAAC for Quality and Excellence in Higher Education

2.2.1 Student Enrolment and Profile:	<ul style="list-style-type: none"><li>• University norms are followed in the admission process.</li><li>• Large number of students from villages.</li><li>• Good number of Girl Students are admitted.</li></ul>
2.2.2 Catering to Student Diversity:	<ul style="list-style-type: none"><li>• Caters primarily to rural students. Reservation policies of Government are followed for SC, ST OBC and students below poverty line under the general category</li><li>• Remedial coaching for slow learners needed.</li></ul>
2.2.3 Teaching-Learning Process:	<ul style="list-style-type: none"><li>• University academic calendar adopted.</li><li>• Lecture and ICT based methods are used for teaching.</li><li>• LCD Projectors &amp; Library resources are utilized.</li></ul>
2.2.4 Teacher Quality:	<ul style="list-style-type: none"><li>• Five teachers have Ph D and four temporary teachers are also PhDholders.</li><li>• Teachers need to attend moreOP/RC.</li><li>• Teachers are encouraged to attend workshop and seminar.</li></ul>
2.2.5 Evaluation Process and Reforms:	<ul style="list-style-type: none"><li>• The evaluation system of the university is followed.</li><li>• All the information regarding examination and evaluation is communicated to the students.</li><li>• IQAC needs to function regularly &amp;effectively</li></ul>
2.2.6 Student Performance and Learning Outcomes:	<ul style="list-style-type: none"><li>• Academic performance (% of Passing) is good.Student's progress and performance are monitored.</li><li>• Some good meritorious studentshave got University Gold Medals..</li></ul>

## NAAC for Quality and Excellence in Higher Education

<b>2.3 Research, Consultancy &amp; Extension:</b>	
2.3.1 Promotion of Research:	<ul style="list-style-type: none"> <li>• A research committee is in place.</li> <li>• The College must encourage research pursuits.</li> <li>• Some research material is noted. Some good books are published by a few faculty members.</li> </ul>
2.3.2 Resource Mobilization for Research:	<ul style="list-style-type: none"> <li>• Budgetary allocation needs to be made for research.</li> <li>• Faculty should pro-actively apply for research projects from various sources.</li> </ul>
2.3.3 Research Facilities:	<ul style="list-style-type: none"> <li>• Limited physical facilities for research exist.</li> <li>• Developing research competence needs to be strengthened.</li> </ul>
2.3.4 Research Publications and Awards :	<ul style="list-style-type: none"> <li>• Some faculty members have published in journals with ISBN &amp; ISSN.</li> <li>• One minor research project completed.</li> <li>• A few faculty members have published some books</li> </ul>
2.3.5 Consultancy:	<ul style="list-style-type: none"> <li>• Absence of formal consultancy services.</li> <li>• Need to make efforts in this direction</li> </ul>
2.3.6 Extension Activities and Institutional Social Responsibility:	<ul style="list-style-type: none"> <li>• Construction of Percolation Tank and other activities undertaken through NSS in an adopted Khomnal village.</li> <li>• Organized regular blood donation camps, Health awareness programme carried out for Girl Students.</li> <li>• Some awareness programme on topics of social relevance.</li> </ul>
2.3.7 Collaboration	<ul style="list-style-type: none"> <li>• Absence of collaboration being a rural college.</li> </ul>

## NAAC for Quality and Excellence in Higher Education

<p><b>2.4 Infrastructure and Learning Resources:</b></p>	
<p>2.4.1 Physical Facilities:</p>	<ul style="list-style-type: none"> <li>● College is spread approx. over seven acres with built up area of approx 3053 sq. mts.</li> <li>● Twenty two Class rooms, one computer lab with internet facility, staff room, and ladies room exist. Napkin vending and disposal machines exist. 34 Computers with internet access.</li> <li>● Very good Gymnasium and Play Ground, canteen, Power Generator and pure Drinking Water available. One Function Hall and an open auditorium exists.</li> </ul>
<p>2.4.2 Library as a Learning Resource:</p>	<ul style="list-style-type: none"> <li>● Library advisory committee needs to be in place.</li> <li>● Library has 28851 books. Minimal seating capacity. <i>Library automation is being initiated.</i></li> </ul>
<p>2.4.3 IT Infrastructure</p>	<ul style="list-style-type: none"> <li>● Computer student ratio needs to be improved</li> <li>● LAN and Wi-Fi facility are limited.</li> <li>● ICT facility is available. Seven LCD projectors are used.</li> </ul>
<p>2.4.4 Maintenance of Campus Facilities:</p>	<ul style="list-style-type: none"> <li>● Class rooms, playground and Canteen needs better maintenance.</li> <li>● Staff employed for campus maintenance.</li> <li>● AMC provide technical assistance and service.</li> </ul>
<p><b>2.5 Student Support and Progression:</b></p>	
<p>2.5.1 Student Mentoring and Support:</p>	<ul style="list-style-type: none"> <li>● College prospectus is published annually.</li> <li>● Scholarships are facilitated to students falling under beneficiary scheme from state Govt., Central Govt. and other agencies.</li> </ul>

## NAAC for Quality and Excellence in Higher Education

	<ul style="list-style-type: none"> <li>• Some financial assistance is provided to the needy students.</li> <li>• Campus recruitment is undertaken for ICICI bank. MPSC Career guidance is provided.</li> </ul>
2.5.2 Student Progression:	<ul style="list-style-type: none"> <li>• The result of the college is generally good.</li> <li>• Good number of students opt for higher education.</li> <li>• Various committees are existing for welfare of students.</li> </ul>
2.5.3 Student Participation and Activities:	<ul style="list-style-type: none"> <li>• Good number of students participate in sports activities and achieved excellent laurels.</li> <li>• Encouragement for sports is visible.</li> <li>• Students participate in debates and other competitions successfully.</li> </ul>
<b>2.6 Governance, Leadership and Management:</b>	
2.6.1 Institutional Vision and Leadership:	<ul style="list-style-type: none"> <li>• Committed institutional leadership after a long period of management uncertainties.</li> <li>• Effective administration through various committees.</li> <li>• Local management Committee is effectively functioning.</li> </ul>
2.6.2 Strategy Development and Deployment	<ul style="list-style-type: none"> <li>• The Institution has to plan a strategy for development.</li> <li>• Key role played by college management in the infrastructure development.</li> <li>• Faculty recruitment and more subjects are needed.</li> </ul>
2.6.3 Faculty Empowerment Strategies:	<ul style="list-style-type: none"> <li>• Faculty members are encouraged to attend various training programmes, seminars and conferences.</li> <li>• The Principal is pro-active with regard to faculty empowerment.</li> <li>• Self-appraisal for faculty is in place. Academic audit needs to be initiated.</li> </ul>

## NAAC for Quality and Excellence in Higher Education

2.6.4 Financial Management and Resource Mobilization:	<ul style="list-style-type: none"> <li>• A good accounts manual is needed.</li> <li>• Financial statements are duly audited as per statutory requirement.</li> <li>• Records are maintained properly.</li> </ul>
2.6.5 Internal Quality Assurance System:	<ul style="list-style-type: none"> <li>• IQAC periodically meets but needs to be effective.</li> <li>• Academic and administrative audit by Solapur University is carried out. Recommendations need to be implemented.</li> </ul>
<b>2.7 Innovations and Best Practices:</b>	
2.7.1 Environment Consciousness:	<ul style="list-style-type: none"> <li>• Rain -water recharging system.</li> <li>• Trees Planted and a few Solar lights are available.</li> </ul>
2.7.2 Innovations:	<ul style="list-style-type: none"> <li>• College organizes expert lectures</li> <li>• Special attention to health of the Girl Children is given.</li> <li>• Sanitary napkin vending and disposal system is established.</li> <li>• NSS camps are organized and a village adopted for development.</li> </ul>
2.7.3 Best Practices:	<ul style="list-style-type: none"> <li>• Wall papers are prepared to enhance students' creativity.</li> <li>• Student are helped monetarily, Sportsperson mentoring is undertaken</li> <li>• Excellent Gymnasium exists.</li> </ul>

## NAAC for Quality and Excellence in Higher Education

Section III: OVERALL ANALYSIS	<b>Observations</b>
3.1 Institutional Strengths:	<ul style="list-style-type: none"><li>• This is the only Arts and Commerce College in the area caters to rural students.</li><li>• Proactive and committed management.</li><li>• Motivating relationship among stake holders.</li><li>• Outstanding sports activities.</li></ul>
3.2 Institutional Weaknesses:	<ul style="list-style-type: none"><li>• Need for PG and other skill based Vocational programmes.</li><li>• Need hostel &amp; Transport for students.</li><li>• Heavy reliance on temporary teachers.</li><li>• Limited choice of subjects Need to add Political Science and Sociology.</li></ul>
3.3 Institutional Opportunities:	<ul style="list-style-type: none"><li>• Scope for mobilization of funds for the overall development.</li><li>• Offering more skill based career oriented courses. To add more UG &amp; PG Courses.</li><li>• Inter-disciplinary courses.</li><li>• Alumni potential to be explored</li></ul>
3.4 Institutional Challenges:	<ul style="list-style-type: none"><li>• Preparing students to face wider competition and challenges to stand in the current job market environment,</li><li>• Language and communication skills for students and teachers.</li><li>• Identifying new and relevant courses.</li><li>• More number of permanent teachers</li><li>• Inculcating research culture</li></ul>



## NAAC for Quality and Excellence in Higher Education

### Section IV: Recommendations for Quality Enhancement of the Institution

- Teachers may be encouraged to obtain Ph.D. degree and engage in research and publications. Necessary to enhance communication skills.
- Hostel and transport facility for students. Physical facilities for cultural activities and hobby Centre.
- ICT enabled teaching learning may be strengthened.
- Academic audit be initiated. Management can take proactive role in enhancing infrastructure, ensuring efficiency. Start Earn while you learn scheme.
- B SW and MSW courses be started. Start B Com Course with English medium.
- Collaboration with NGOs, GOs and Civil Society organizations needed.
- Vacant teaching and non-teaching posts may be filled.
- To introduce Sociology & Political Science along with multi faculty U.G. & P.G. courses.
- Some more add-on/Career oriented courses may be initiated.
- Research project from different funding agencies may be undertaken.
- Make IQAC effective for all round development of the institution with quality consciousness.

I agree with the Observations of the Peer Team as mentioned in this report.

**Signature of the Head of the Institution**

Seal of the Institution

**Signatures of the Peer Team Members:**

<b>Name and Designation</b>		<b>Signature with date</b>
<b>Dr. R.S. Deshpande</b>	<b>Chairperson</b>	
<b>Dr. S V Sudheer</b>	<b>Member Co-ordinator</b>	
<b>Prof. D P Singh</b>	<b>Member</b>	
<b>Dr. Ganesh Hegde</b>	<b>NAAC Officer</b>	

Place: Mangalwdha, Dist Solapur

Date: 10-09-2016



राष्ट्रीय मूल्यांकन एवं प्रत्यायन परिषद  
विश्वविद्यालय अनुदान आयोग का स्वायत्त संस्थान  
**NATIONAL ASSESSMENT AND ACCREDITATION COUNCIL**  
An Autonomous Institution of the University Grants Commission

## Quality Profile

Name of the Institution : Shri Sant Damaji Mahavidyalaya

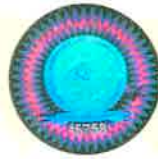
Place : Mangalwedha, Dist. Solapur, Maharashtra

Criteria	Weightage (W <sub>i</sub> )	Criterion-wise Weighted Grade Point (Cr WGP <sub>i</sub> )	Criterion-wise Grade Point Averages (Cr WGP <sub>i</sub> / W <sub>i</sub> )
I. Curricular Aspects	100	230	2.30
II. Teaching-Learning and Evaluation	350	840	2.40
III. Research, Consultancy and Extension	150	250	1.67
IV. Infrastructure and Learning Resources	100	180	1.80
V. Student Support and Progression	100	220	2.20
VI. Governance, Leadership & Management	100	220	2.20
VII. Innovations and Best Practices	100	300	3.00
<b>Total</b>	$\sum_{i=1}^7 W_i = 1000$	$\sum_{i=1}^7 (Cr WGP_i) = 2240$	

$$\text{Institutional CGPA} = \frac{\sum_{i=1}^7 (Cr WGP_i)}{\sum_{i=1}^7 W_i} = \frac{2240}{1000} = \boxed{2.24}$$

Grade = **B**

Date : November 05, 2016



*D. Singh*  
Director

- This certification is valid for a period of Five years with effect from November 05, 2016
- An institutional CGPA on seven point scale in the range of 3.76 - 4.00 denotes A\*\* grade, 3.51 - 3.75 denotes A+ grade, 3.01 - 3.50 denotes A grade, 2.76 - 3.00 denotes B\*\* grade, 2.51 - 2.75 denotes B+ grade, 2.01 - 2.50 denotes B grade, 1.51 - 2.00 denotes C grade
- Scores rounded off to the nearest integer